

# OFFICE FOR LEASE

**RUTLEDGE MONROE - 1129 W MAIN ST, MONROE, WA 98272**  
**SUITE 194 -1,060 SF**



- BEAUTIFUL BUILDING ON THE CORNER OF WEST MAIN ST. AND DENNIS WAY
- EASY ACCESS TO HWY 2 and HWY 522
- FANTASTIC SIGNAGE
- BEAUTIFUL OFFICE BUILD-OUT



**JOIN THESE ESTABLISHED TENANTS:**

- EFINITY TECHNOLOGIES, INC
- RE/MAX LEGACY
- MONROE MEDICAL MASSAGE

**OFFICE \$15.00 PSF + NNN | 1 SUITE AVAILABLE**



**Rodney Talley Jr.**  
*Sales and Leasing Broker*

425-345-4431

Rodney@bradleycommercial.net

License Number 111936

**Natalie Foskey, CPM, CCIM**  
*Designated Broker*

425-343-7176

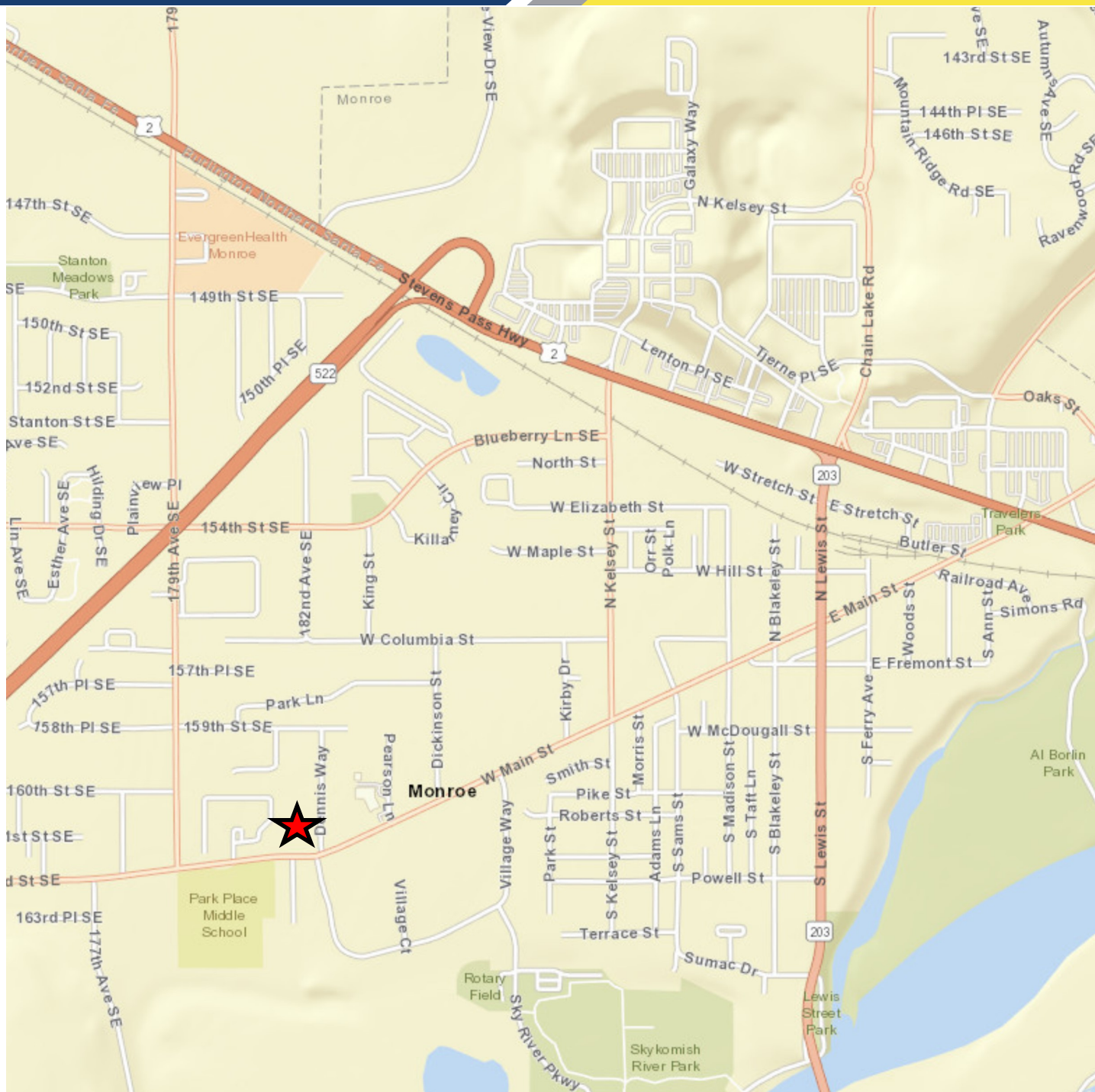
Natalie@bradleycommercial.net

License Number 26699



6116 211th St. SW #203, Lynnwood, WA 98036

www.bradleycommercial.net 425-658-3288 Firm # 7894



OFFICE \$15.00 PSF + NNN | 1 SUITE AVAILABLE



**BRADLEY COMMERCIAL**  
REAL ESTATE

6116 211th St. SW #203, Lynnwood, WA 98036

425-658-3288

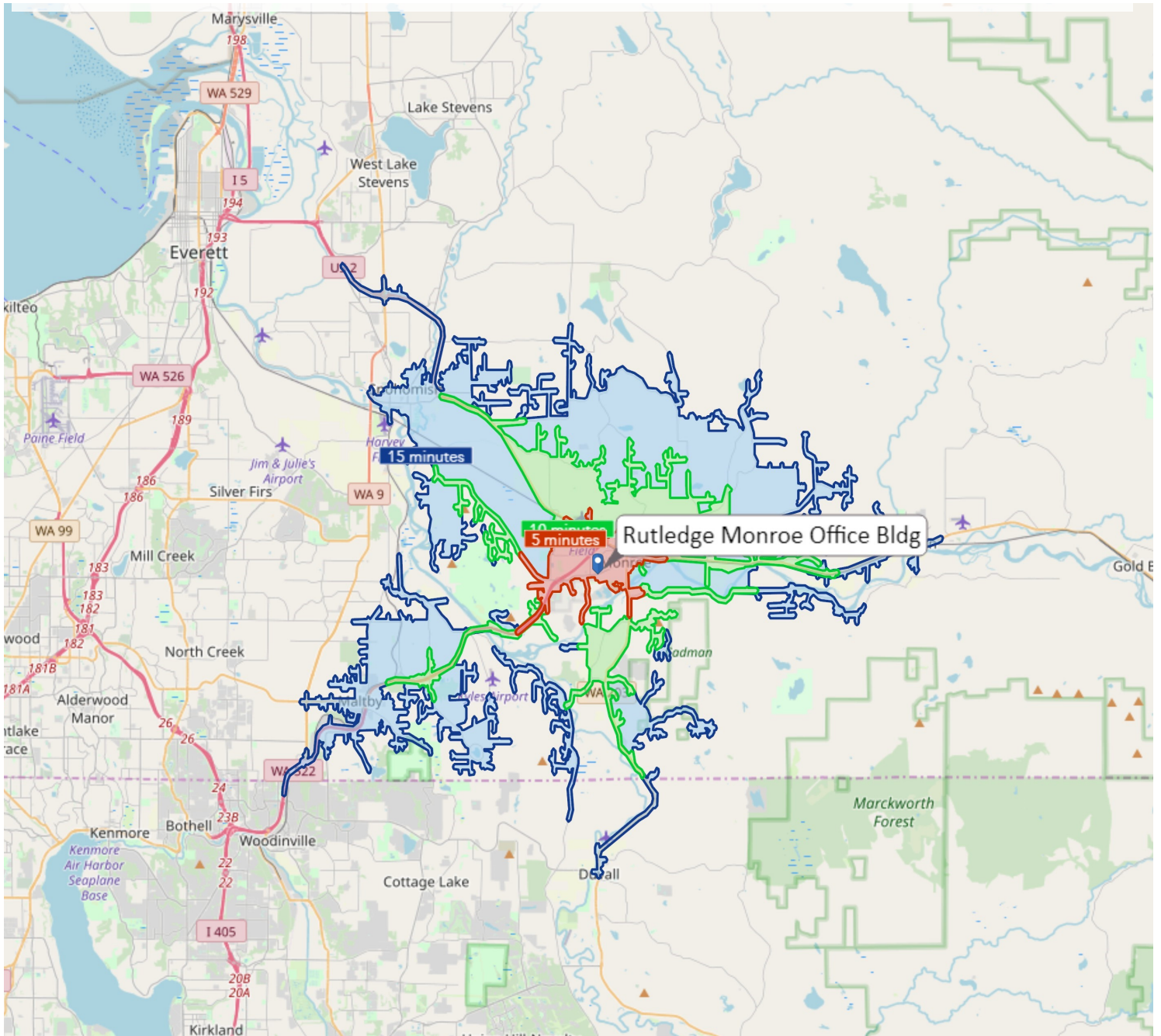
[WWW.BRADLEYCOMMERCIAL.NET](http://WWW.BRADLEYCOMMERCIAL.NET)

[info@bradleycommercial.net](mailto:info@bradleycommercial.net)

Firm License #7894



## RUTLEDGE MONROE - 1129 W MAIN ST, MONROE, WA 98272



©Bradley Commercial Real Estate LLC

Disclaimer: The information in this document has been secured from sources believed to be reliable; however, Bradley Commercial Real Estate has not verified and will not verify any of the information contained herein and makes no representations to its accuracy. Prospective tenants or buyers should consult their professional advisors and conduct their own independent investigations. Properties are subject to change in price and/or availability without notice.

# OFFICE \$15.00 PSF + NNN | 1 SUITE AVAILABLE



**BRADLEY COMMERCIAL**  
REAL ESTATE

6116 211th St. SW #203, Lynnwood, WA 98036

425-658-3288

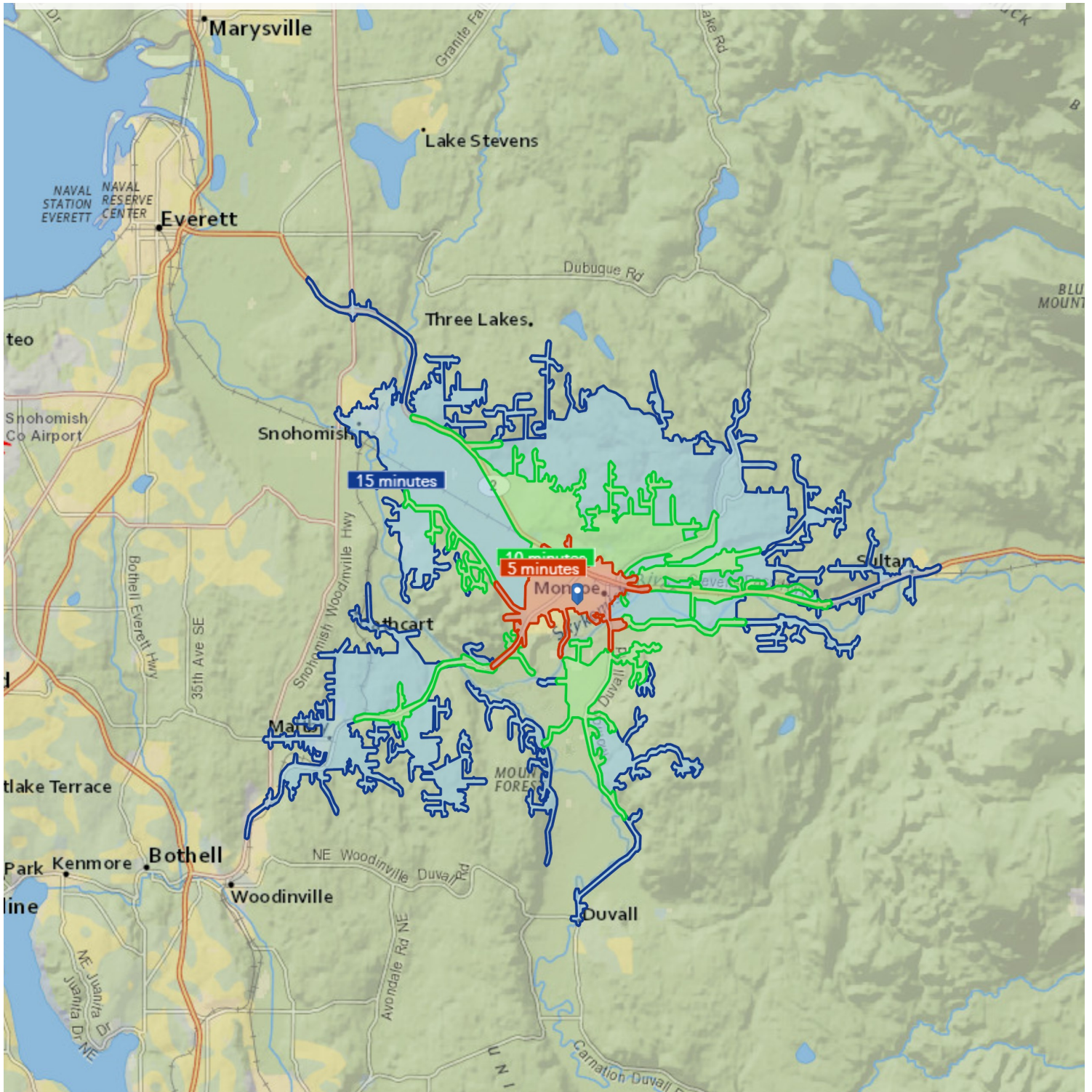
[WWW.BRADLEYCOMMERCIAL.NET](http://WWW.BRADLEYCOMMERCIAL.NET)

[info@bradleycommercial.net](mailto:info@bradleycommercial.net)

Firm License #7894



## RUTLEDGE MONROE - 1129 W MAIN ST, MONROE, WA 98272



**BRADLEY COMMERCIAL**  
REAL ESTATE

6116 211th St. SW #203, Lynnwood, WA 98036

425-658-3288

[WWW.BRADLEYCOMMERCIAL.NET](http://WWW.BRADLEYCOMMERCIAL.NET)

[info@bradleycommercial.net](mailto:info@bradleycommercial.net)

Firm License #7894



## Market Profile

1129 W Main St, Monroe, Washington, 98272  
Drive Time Bands: 0-5, 5-10, 10-15 minute radii

Natalie Foskey 425-343-7176

Latitude: 47.85096

Longitude: -121.98634

	0 - 5 minute	5 - 10 minute	10 - 15 minute
<b>Population Summary</b>			
2000 Total Population	10,254	4,176	16,786
2010 Total Population	11,054	6,157	18,258
2019 Total Population	11,883	7,702	20,023
2019 Group Quarters	468	64	94
2024 Total Population	12,437	8,480	21,203
2019-2024 Annual Rate	0.92%	1.94%	1.15%
2019 Total Daytime Population	11,699	8,012	15,657
Workers	5,570	4,560	6,423
Residents	6,129	3,452	9,234
<b>Household Summary</b>			
2000 Households	3,506	1,414	6,076
2000 Average Household Size	2.80	2.90	2.75
2010 Households	3,797	2,044	6,854
2010 Average Household Size	2.79	2.98	2.65
2019 Households	4,059	2,520	7,466
2019 Average Household Size	2.81	3.03	2.67
2024 Households	4,252	2,769	7,900
2024 Average Household Size	2.81	3.04	2.67
2019-2024 Annual Rate	0.93%	1.90%	1.14%
2010 Families	2,634	1,660	5,031
2010 Average Family Size	3.30	3.26	3.04
2019 Families	2,786	2,041	5,451
2019 Average Family Size	3.34	3.32	3.06
2024 Families	2,907	2,241	5,761
2024 Average Family Size	3.35	3.33	3.07
2019-2024 Annual Rate	0.85%	1.89%	1.11%
<b>Housing Unit Summary</b>			
2000 Housing Units	3,682	1,509	6,356
Owner Occupied Housing Units	56.6%	82.6%	72.5%
Renter Occupied Housing Units	38.6%	11.2%	23.1%
Vacant Housing Units	4.8%	6.2%	4.4%
2010 Housing Units	4,000	2,183	7,341
Owner Occupied Housing Units	55.6%	81.0%	70.6%
Renter Occupied Housing Units	39.3%	12.6%	22.7%
Vacant Housing Units	5.1%	6.4%	6.6%
2019 Housing Units	4,218	2,619	7,886
Owner Occupied Housing Units	56.1%	84.4%	71.7%
Renter Occupied Housing Units	40.1%	11.8%	22.9%
Vacant Housing Units	3.8%	3.8%	5.3%
2024 Housing Units	4,399	2,862	8,303
Owner Occupied Housing Units	57.3%	85.6%	72.9%
Renter Occupied Housing Units	39.4%	11.2%	22.2%
Vacant Housing Units	3.3%	3.2%	4.9%
<b>Median Household Income</b>			
2019	\$75,903	\$110,264	\$101,432
2024	\$88,398	\$120,657	\$112,674
<b>Median Home Value</b>			
2019	\$291,798	\$424,857	\$493,881
2024	\$334,785	\$559,192	\$606,236
<b>Per Capita Income</b>			
2019	\$29,844	\$41,816	\$47,031
2024	\$36,527	\$47,279	\$53,806
<b>Median Age</b>			
2010	31.6	35.9	40.9
2019	32.8	36.6	43.1
2024	32.3	37.2	43.8

**Data Note:** Household population includes persons not residing in group quarters. Average Household Size is the household population divided by total households. Persons in families include the householder and persons related to the householder by birth, marriage, or adoption. Per Capita Income represents the income received by all persons aged 15 years and over divided by the total population.

**Source:** U.S. Census Bureau, Census 2010 Summary File 1. Esri forecasts for 2019 and 2024 Esri converted Census 2000 data into 2010 geography.

July 03, 2019



**BRADLEY COMMERCIAL**  
REAL ESTATE

6116 211th St. SW #203, Lynnwood, WA 98036

425-658-3288

WWW.BRADLEYCOMMERCIAL.NET

info@bradleycommercial.net

Firm License #7894